



# ASA 2.5

## HIGHLIGHTS

# AGENDA

## ASA 2.5 - Highlights

- |   |   |
|---|---|
| 1 | Vehicle option information                                    |
| 2 | Bookmarks and VINs - Increased bookmarks and saved VIN        |
| 3 | ASA WEB - Start ASA WEB from ASA                              |
| 4 | Enhanced illustrations - For Preset PNCs, main and sub groups |
| 5 | Account status - Keep ASA up-to-date                          |
| 6 | Additional languages  |

# 1. VEHICLE OPTION INFORMATION

Show OPC codes

## BENEFIT

Check the OPC list for the selected VIN's Option code.

The screenshot shows a vehicle information form with the following fields:

- CAPS | Ext. orders | partslink24
- M60 - EUROPE 2020-08-07
- VIN: JMAXDGG2WGZ
- OUTLANDER PHEV(EUR)
- 2000 PLUG-IN HYBRID
- H-LINE(4WD),PHEV
- RHD
- Licence plate: [empty]
- Model: GG2W
- Classification: XDHHZR6
- Option: T60 (highlighted with a red box)
- Exterior: X40A
- Interior: 98P
- Production Period: 2016032 - 2016032

## HOW TO CHECK THE OPC LIST

Double-click the Option code, then the OPC list screen is displayed.

The screenshot shows the OPC - List screen with the following fields:

- Model: GG2W
- Classification: XDHHZR6
- Option: T60
- Production Period: 2016032-2016032

The OPC list table is as follows:

No	OPC	Description
1	F30	STEERING CONTROL SWITCH
2	F31	STEERING SHIFT SWITCH
3	F41	STEERING HEATER
4	H10	SPEEDOMETER (MPH)
5	J46	AUDIO SYSTEM (3)
6	J71	MULTI VISION
7	K03	LEATHER SEAT & ROOM TRIM
8	M36	ELECTRONIC CHROMIC ROOM MIRROR
9	N22	SUNROOF
10	N66	POWER TAILGATE

Close [icon] Total Line: 33

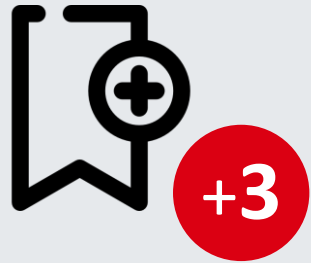
Note: OPC list may contain options that are not actually on the customer's vehicle.

# 2. Bookmarks and VINs

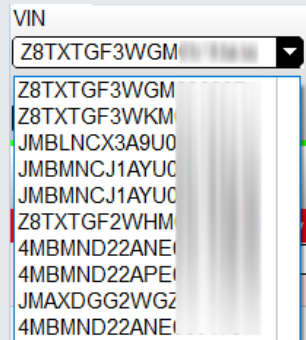
Increased bookmarks and saved VIN

## BENEFIT

Bookmarks work on up to 3 vehicles.



Save up to 10 previously searched VINs.



## HOW TO USE BOOKMARKS

### Save bookmark

Select the slot to save and click the „OK“ button.

Market	VIN	Model	Classification	Last change
M60		K14T		2020/05/25 14:44
Unused				
M60	JMAXDGG2WGZ	GG2W	XDHHZR6	2020/08/17 17:52

OK Cancel

### Open bookmark

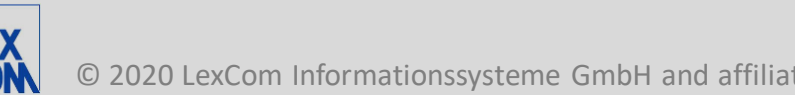
Select the bookmark to open and click the „OK“ button.

Market	VIN	Model	Classification	Last change
M60		K14T		2020/05/25 14:44
Unused				
M60	JMAXDGG2WGZ	GG2W	XDHHZR6	2020/08/17 17:52

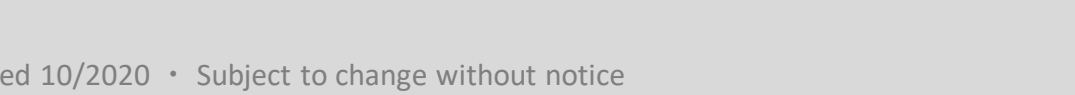
OK Cancel

## Start ASA WEB from ASA

Experience the web-based version of ASA CAPS optimized for mobile devices (One demo model is available for non-licensed users).



ASA WEB can be started from ASA's help menu.

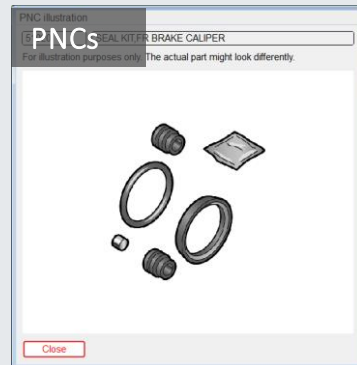
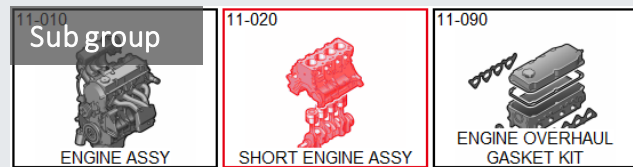
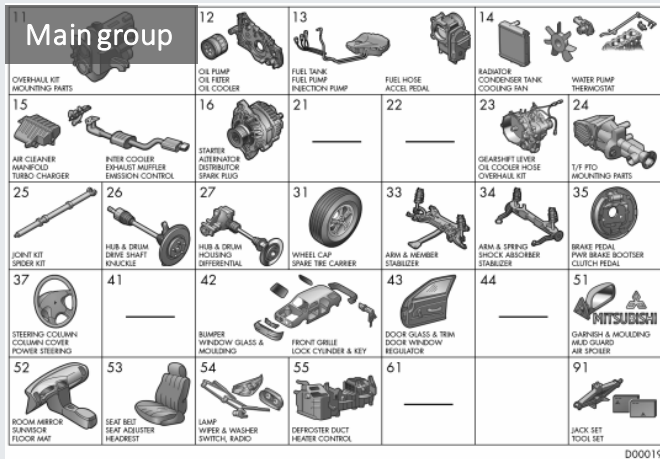


# 4. Enhanced illustrations

Main and sub groups, and new PNC illustration for Preset PNCs

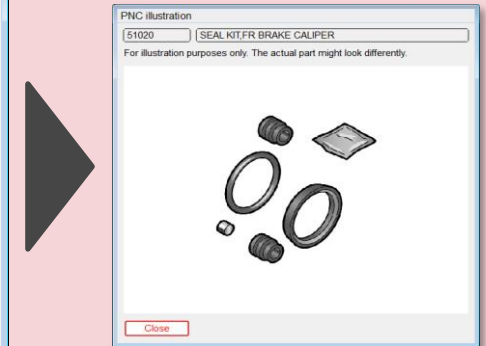
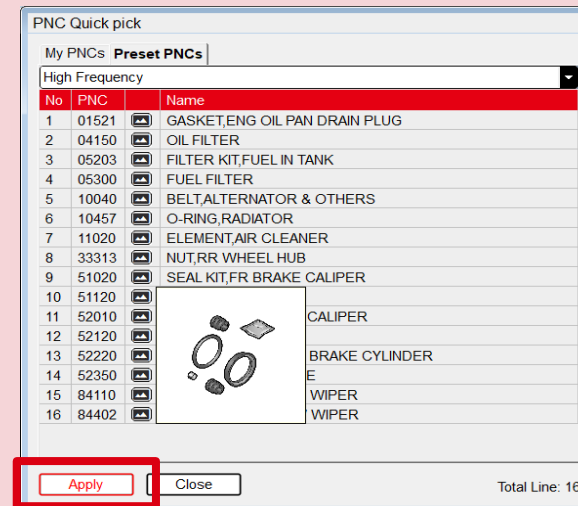
## BENEFIT

Easier selection of groups and PNCs.



## HOW TO SEE THE PNC ILLUSTRATION

- If there is a PNC illustration, the icon is displayed.
- Move the mouse pointer over the icon to display a small illustration in a tooltip.
- Click the icon to display a large illustration screen.




Note: For illustration purpose only. The actual part might look differently.


# 5. ACCOUNT STATUS

Keep ASA up to date

## BENEFIT

Keep ASA up to date

If the account data has not been set or the setting information has not been verified for several days,  mark is displayed in the status bar.

2020/10/02  Update 762 Version: 2.4.9.7

**Important:** If the account data has not been set, set it in the "Account data" tab in the "ASA Configuration Utility". Please select the menu path **File -> Setup**.


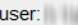
## HOW TO CHECK ACCOUNT DATA STATUS

Account data check status is displayed in the „Info about ASA“ .

Info about ASA

ASA Version 2.4.9.3 (30) Chromium

Copyright (C) 2015 - 2020, LexCom GmbH

Last online account check:  
2020/08/18 10:31:34 - account:  - user:  - status: OK

Update M00 CAPS: 756	(2020-08-07)	Add-ON Online Price:	55	(2020-08-03)
Update M00 CALC: 106	(2020-07-24)	Add-ON VSP/DMX:	49	(2020-07-03)
Update M50 CAPS: 652	(2020-08-07)	Add-ON Distributor Memo:	76	(2020-07-06)
Update M60 CAPS: 672	(2020-08-07)	Add-ON MMC Memo:	36	(2020-07-30)
Update M70 CAPS: 668	(2020-07-31)			
Update M80 CAPS: 635	(2020-07-31)			

Server path : C:\MMC\ASA\_SERVER

MMC Hasp HL: 116730

Privacy Policy

Data processing

Terms and Conditions

# 6. ADDITIONAL LANGUAGES

Added ADD-ON languages

## BENEFIT

Use ASA in your local language.

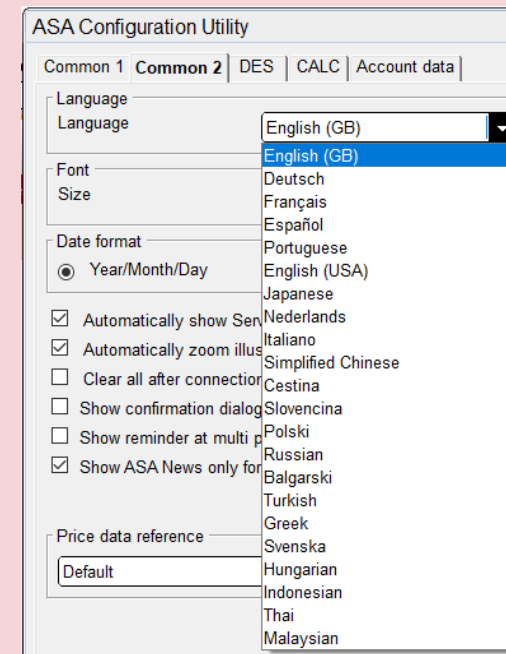
Additional 9 languages are added.

- Polish
- Swedish
- Hungarian
- Bulgarian
- Turkish
- Greek
- Indonesian
- Malaysian
- Thai



## HOW TO USE IT

Select your language in ASA under File > Setup.



Note: Additional languages are available, after registering the account data.